

# Les TAMARIS

35 220 CHATEAUBOURG

Maître d'oeuvre  
**RHIZOME**  
AGENCE D'ARCHITECTURE ET D'URBANISME  
 RHIZOME  
 18 avenue du bois labbé - 35000 RENNES  
 Tél: 02.99.27.76.33 - www.agence-rhizome.fr

Maître d'ouvrage  
 SCCV "LES OCEANIDES"  
 49, mail François Mitterrand - 35000 RENNES  
 Tél: 02.99.85.99.03 - www.cap-accession.fr

Maître d'ouvrage délégué



**PROMOTEUR COOPÉRATIF**  
 49, mail François Mitterrand - 35000 RENNES  
 Tél: 02.99.85.99.03 - www.cap-accession.fr

**C103 T3**

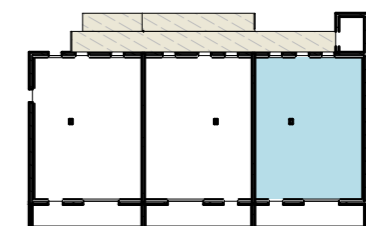
APPARTEMENT  
**C103**

**R+1**



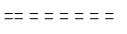


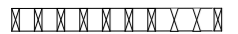
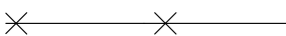

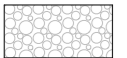

Le: 07 Juillet 2022  
 Echelle: 1/75

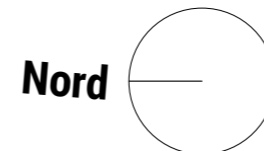
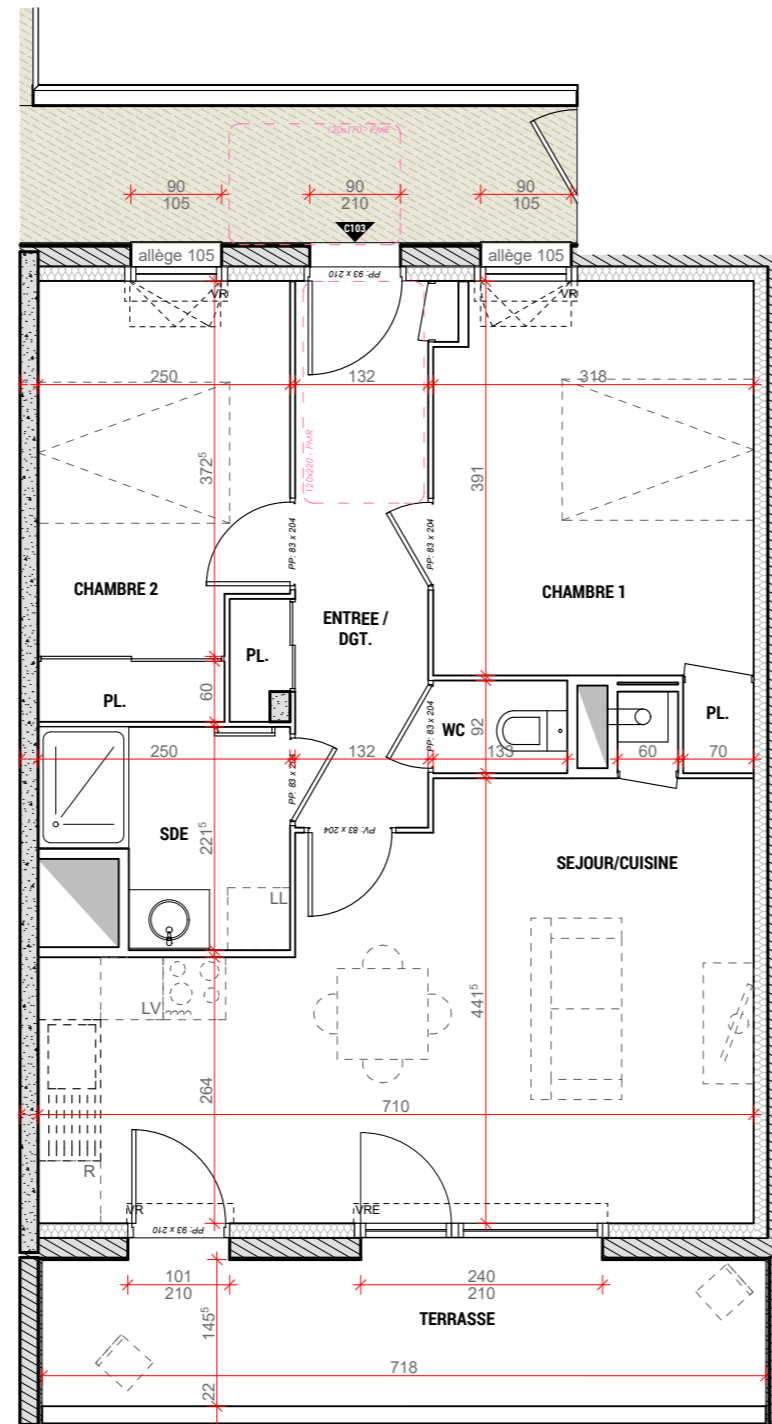
DESIGNATION	SURFACES HABITABLES
ENTREE / DGT + PL.	7.75
SEJOUR / CUISINE	26.55
WC	1.15
SDE	4.60
CHAMBRE 1 + PL.	12.80
CHAMBRE 2 + PL.	9.95
<b>TOTAL</b>	<b>62.80</b>
TERRASSE	10.40

LOCALISATION R+1



**LEGENDE:**  
 - VRE : VOLET ROULANT ELECTRIQUE  
 - VR : VOLET ROULANT  
 - OB : OSCILLO BATTANT

-  ESPACE TECHNIQUE ELECTRIQUE DU LOGEMENT
-  SOFFITE
-  CLOISON DÉMONTABLE
-  RETOMBÉE DE POUTRE (Suivant étude BA)  
ou RETOMBÉE DE BALCON
-  TRAPPE ACCES VMC
-  PARE-VUE BOIS (HT min 2.50m)
-  CLÔTURE
-  TALUS
-  GRAVIERS
-  HAIE



NOTA: Des modifications mineures ou des aménagements de détails nécessaires pour des raisons d'ordre technique ou administratif pourront être apportés aux plans.