

Les TAMARIS

35 220 CHATEAUBOURG

Maître d'oeuvre
RHIZOME
 AGENCE D'ARCHITECTURE ET D'URBANISME
 RHIZOME
 18 avenue du bois labbé - 35000 RENNES
 Tél: 02.99.27.76.33 - www.agence-rhizome.fr

Maître d'ouvrage
 SCCV "LES OCEANIDES"
 49, mail François Mitterrand - 35000 RENNES
 Tél: 02.99.85.99.03 - www.cap-accession.fr

Maître d'ouvrage délégué

PROMOTEUR COOPÉRATIF
 49, mail François Mitterrand - 35000 RENNES
 Tél: 02.99.85.99.03 - www.cap-accession.fr

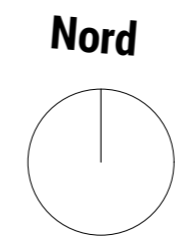
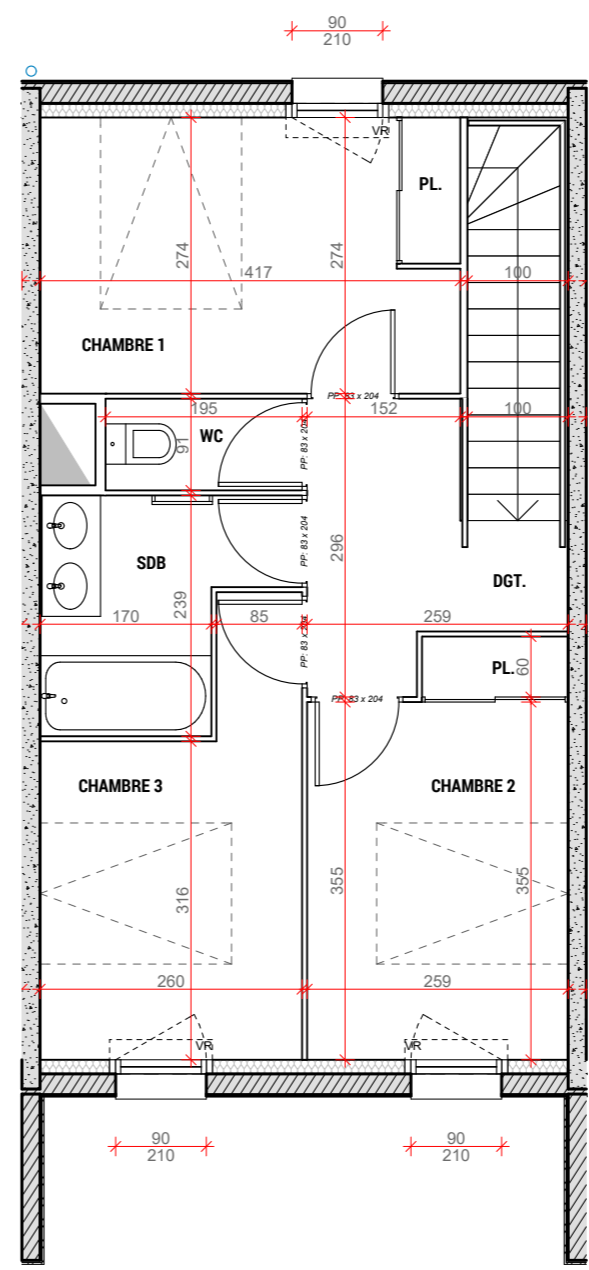
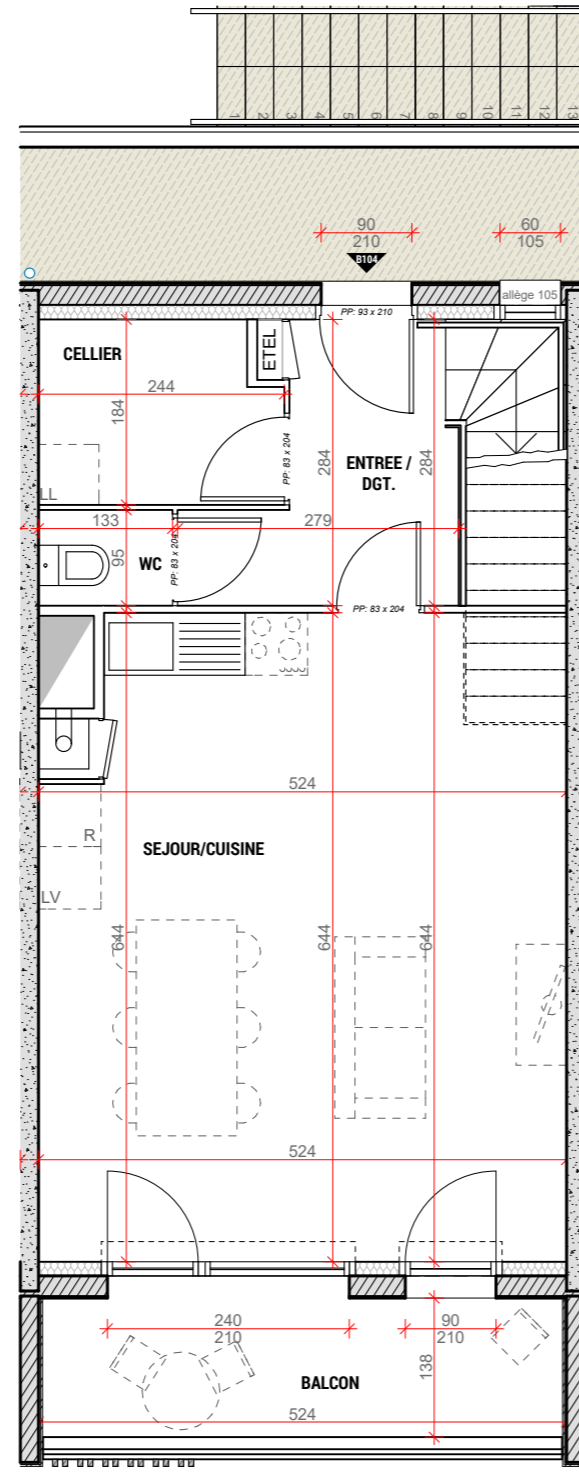
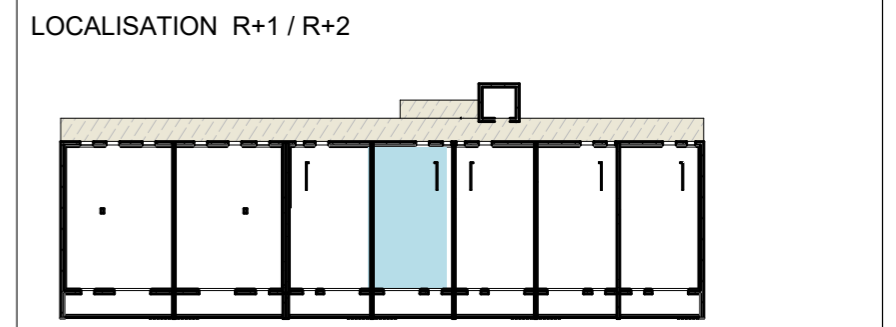
B104 T4 (duplex)



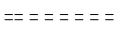
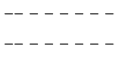
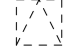
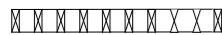
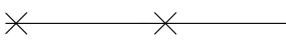

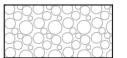

APPARTEMENT
B104

R+1 / R+2

Le: 07 Juillet 2022
 Echelle: 1/75

DESIGNATION	SURFACES HABITABLES
<u>R+1</u>	
ENTREE / DGT.	5.80
CELLIER	4.20
SEJOUR / CUISINE	32.95
WC	1.20
<u>R+2</u>	
DGT	5.35
WC	1.70
CHAMBRE 1 + PL.	11.30
CHAMBRE 2 + PL.	10.00
CHAMBRE 3	9.40
SDB	4.80
TOTAL	86.70
BALCON	6.95



- LEGENDE:**
- VRE : VOLET ROULANT ELECTRIQUE
 - VR : VOLET ROULANT
 - OB : OSCILLO BATTANT
-  ESPACE TECHNIQUE ELECTRIQUE DU LOGEMENT
 -  SOFFITE
 -  CLOISON DÉMONTABLE
 -  RETOMBÉE DE POUTRE (Suivant étude BA) ou RETOMBÉE DE BALCON
 -  TRAPPE ACCES VMC
 -  PARE-VUE BOIS (HT min 2.50m)
 -  CLÔTURE
 -  TALUS
 -  GRAVIERS
 -  HAIE

NOTA: Des modifications mineures ou des aménagements de détails nécessaires pour des raisons d'ordre technique ou administratif pourront être apportés aux plans.