

Les TAMARIS

35 220 CHATEAUBOURG

Maître d'oeuvre
RHIZOME
AGENCE D'ARCHITECTURE ET D'URBANISME
 RHIZOME
 18 avenue du bois labbé - 35000 RENNES
 Tél: 02.99.27.76.33 - www.agence-rhizome.fr

Maître d'ouvrage
 SCCV "LES OCEANIDES"
 49, mail François Mitterrand - 35000 RENNES
 Tél: 02.99.85.99.03 - www.cap-accession.fr

Maître d'ouvrage délégué

PROMOTEUR COOPÉRATIF
 49, mail François Mitterrand - 35000 RENNES
 Tél: 02.99.85.99.03 - www.cap-accession.fr

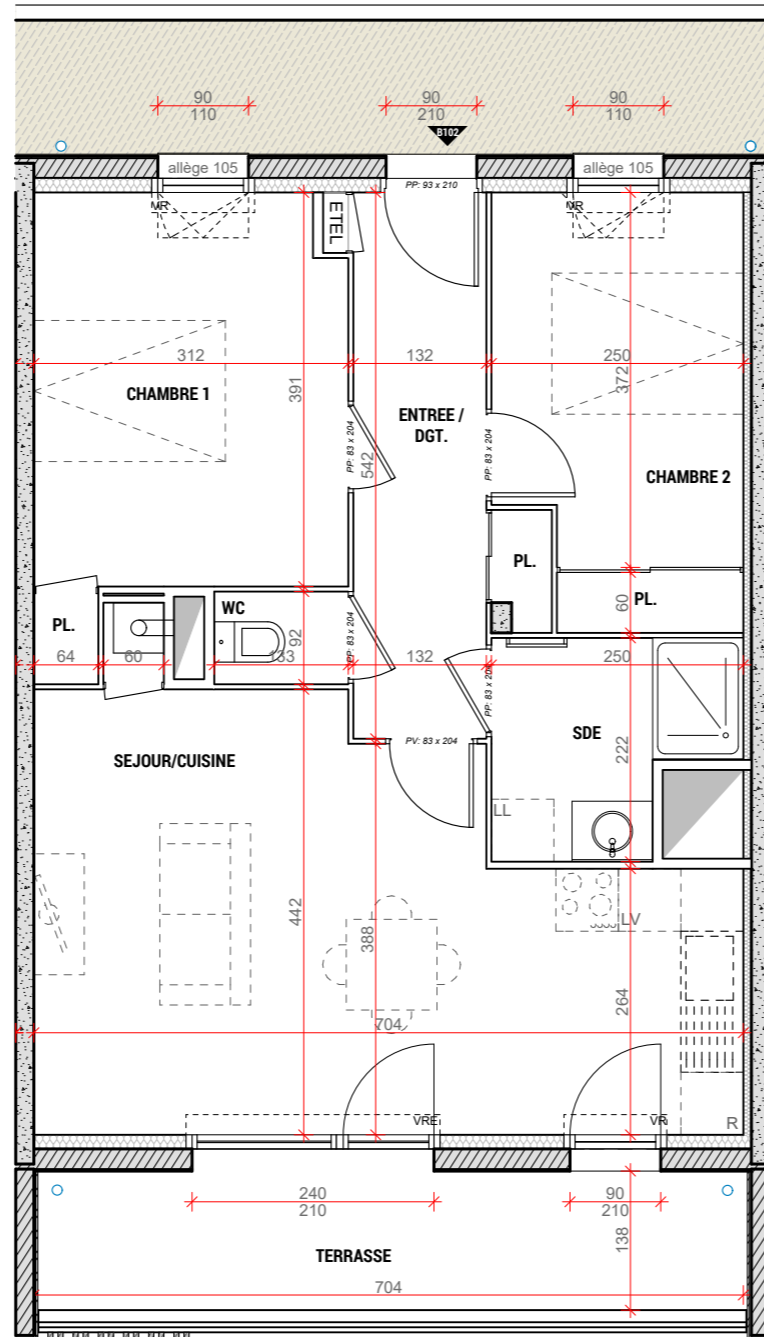
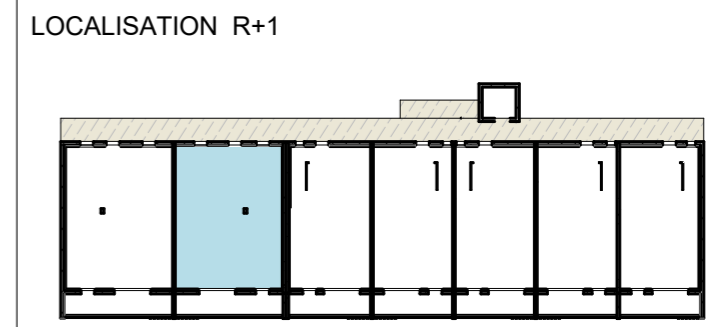
B102 **T3**



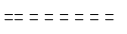


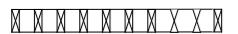
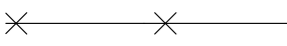



| DESIGNATION | SURFACES HABITABLES |
|--------------------|---------------------|
| ENTREE / DGT + PL. | 7.75 |
| SEJOUR / CUISINE | 26.25 |
| WC | 4.55 |
| SDE | 1.15 |
| CHAMBRE 1 + PL. | 12.50 |
| CHAMBRE 2 + PL. | 9.95 |
| TOTAL | 62.15 |
| TERRASSE | 9.45 |

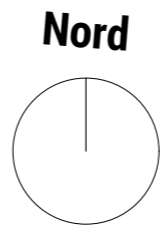
APPARTEMENT
B102

R+1

Le: 07 Juillet 2022
 Echelle: 1/75



- LEGENDE:**
- VRE : VOLET ROULANT ELECTRIQUE
 - VR : VOLET ROULANT
 - OB : OSCILLO BATTANT
-  ESPACE TECHNIQUE ELECTRIQUE DU LOGEMENT
 -  SOFFITE
 -  CLOISON DÉMONTABLE
 -  RETOMBÉE DE POUTRE (Suivant étude BA) ou RETOMBÉE DE BALCON
 -  TRAPPE ACCES VMC
 -  PARE-VUE BOIS (HT min 2.50m)
 -  CLÔTURE
 -  TALUS
 -  GRAVIERS
 -  HAIE



NOTA: Des modifications mineures ou des aménagements de détails nécessaires pour des raisons d'ordre technique ou administratif pourront être apportés aux plans.