

Les TAMARIS

35 220 CHATEAUBOURG

Maître d'oeuvre
RHIZOME
AGENCE D'ARCHITECTURE ET D'URBANISME
 RHIZOME
 18 avenue du bois labbé - 35000 RENNES
 Tél: 02.99.27.76.33 - www.agence-rhizome.fr

Maître d'ouvrage
 SCCV "LES OCEANIDES"
 49, mail François Mitterrand - 35000 RENNES
 Tél: 02.99.85.99.03 - www.cap-accession.fr

Maître d'ouvrage délégué

PROMOTEUR COOPÉRATIF
 49, mail François Mitterrand - 35000 RENNES
 Tél: 02.99.85.99.03 - www.cap-accession.fr

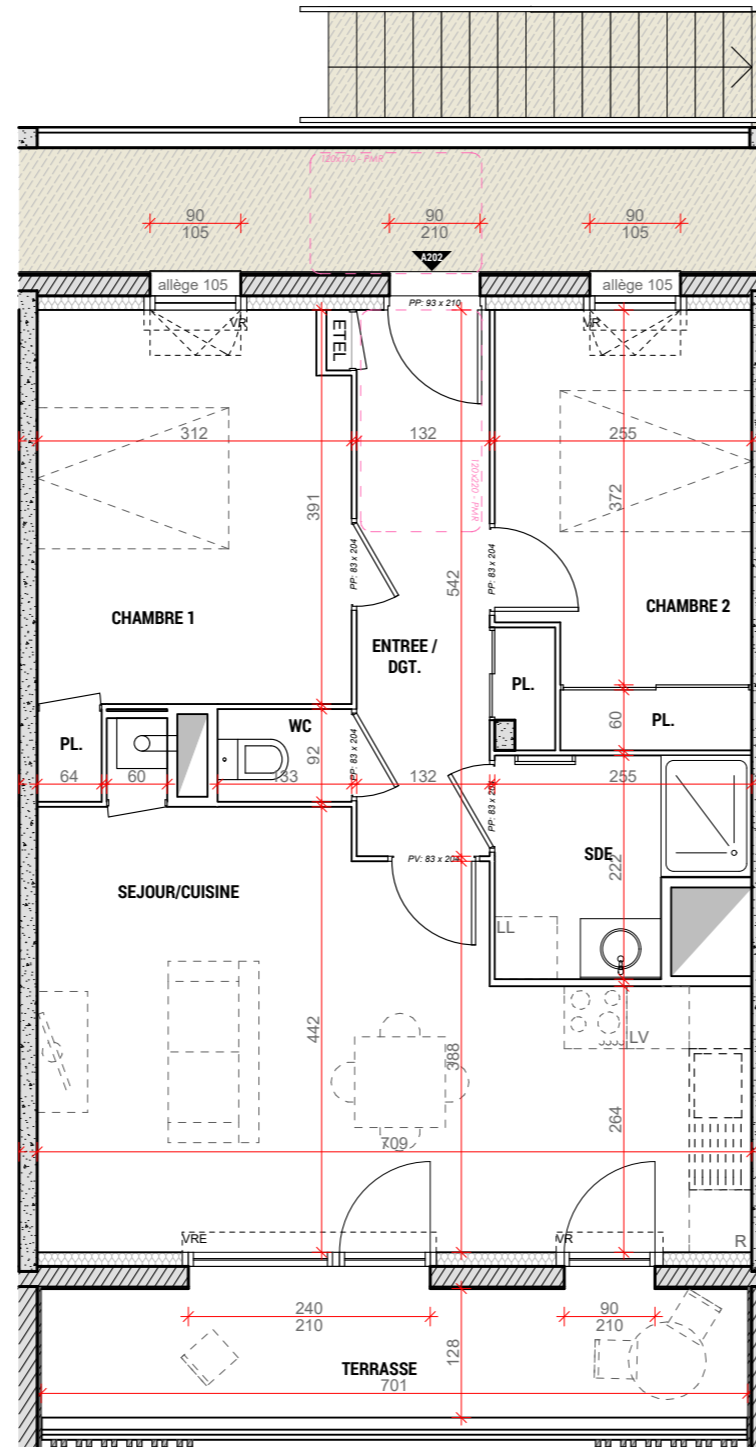
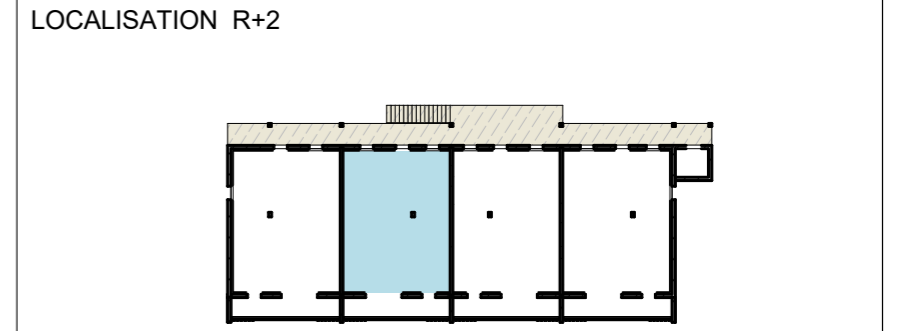
A202 **T3**

| DESIGNATION | SURFACES HABITABLES |
|--------------------|---------------------|
| ENTREE / DGT + PL. | 7.85 |
| SEJOUR / CUISINE | 26.15 |
| WC | 1.15 |
| SDE | 4.70 |
| CHAMBRE 1 + PL. | 12.55 |
| CHAMBRE 2 + PL. | 10.20 |
| TOTAL | 62.60 |
| TERRASSE | 8.75 |



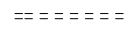


APPARTEMENT
A202

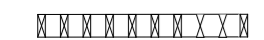
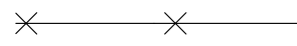



R+2

Le: 07 Juillet 2022
 Echelle: 1/75



LEGENDE:
 - VRE : VOLET ROULANT ELECTRIQUE
 - VR : VOLET ROULANT
 - OB : OSCILLO BATTANT

-  ESPACE TECHNIQUE ELECTRIQUE DU LOGEMENT
-  SOFFITE
-  CLOISON DÉMONTABLE
-  RETOMBÉE DE POUTRE (Suivant étude BA) ou RETOMBÉE DE BALCON
-  TRAPPE ACCES VMC

-  PARE-VUE BOIS (HT min 2.50m)
-  CLÔTURE
-  TALUS
-  GRAVIERS
-  HAIE

NOTA: Des modifications mineures ou des aménagements de détails nécessaires pour des raisons d'ordre technique ou administratif pourront être apportés aux plans.