

Les TAMARIS

35 220 CHATEAUBOURG

Maître d'oeuvre
RHIZOME
AGENCE D'ARCHITECTURE ET D'URBANISME
 RHIZOME
 18 avenue du bois labbé - 35000 RENNES
 Tél: 02.99.27.76.33 - www.agence-rhizome.fr

Maître d'ouvrage
 SCCV "LES OCEANIDES"
 49, mail François Mitterrand - 35000 RENNES
 Tél: 02.99.85.99.03 - www.cap-accession.fr

Maître d'ouvrage délégué



capaccession
 PROMOTEUR COOPÉRATIF
 49, mail François Mitterrand - 35000 RENNES
 Tél: 02.99.85.99.03 - www.cap-accession.fr

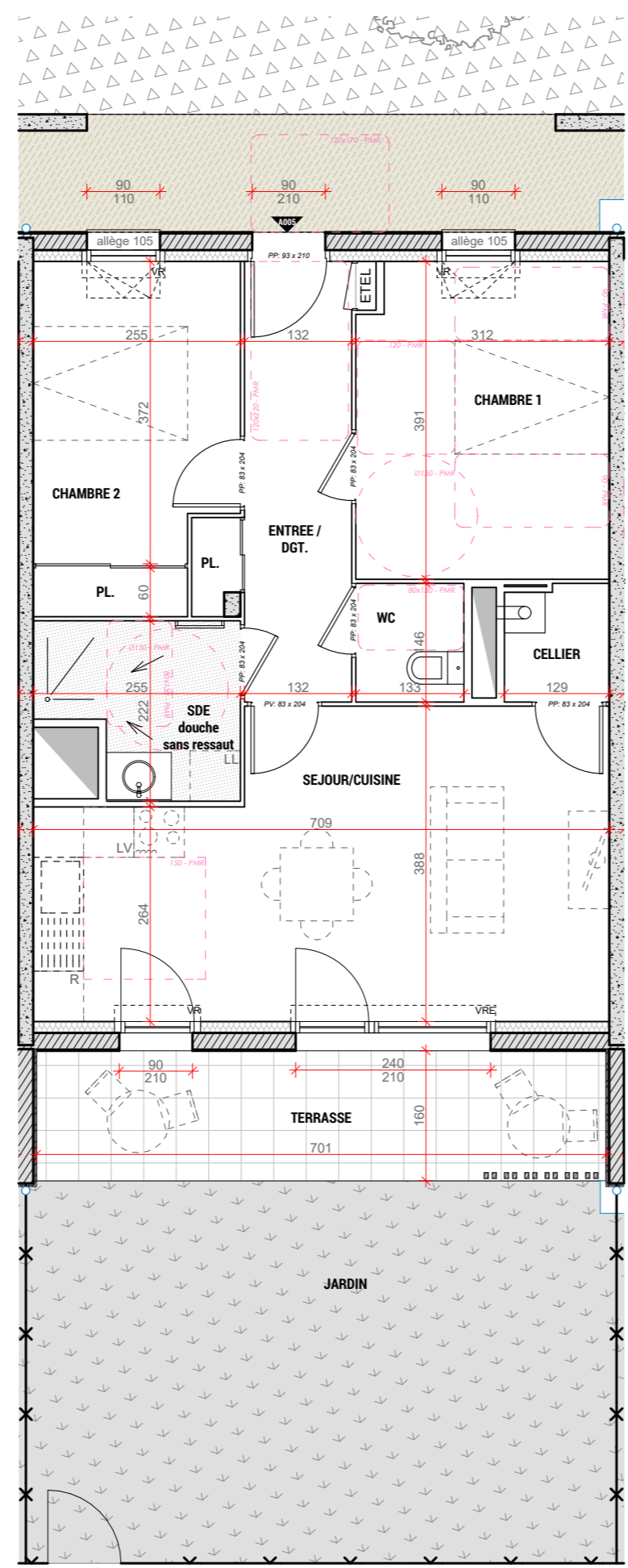
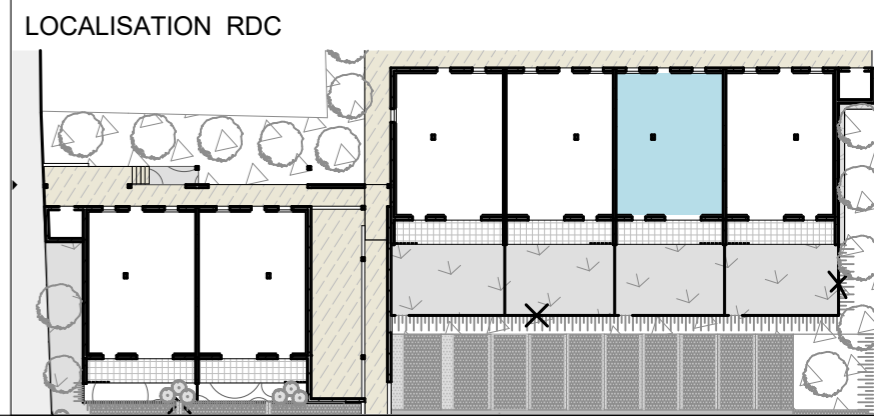
A005 T3

APPARTEMENT
A005



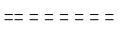
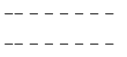

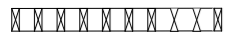
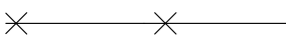

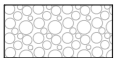

RDC

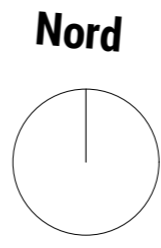
Le: 07 Juillet 2022
 Echelle: 1/75

DESIGNATION	SURFACES HABITABLES
ENTREE / DGT + PL.	7.80
SEJOUR / CUISINE	24.25
CELLIER	1.80
WC	1.90
SDE	4.70
CHAMBRE 1	11.95
CHAMBRE 2 + PL.	10.20
TOTAL	62.60
TERRASSE	11.15
JARDIN	34.10



LEGENDE:
 - VRE : VOLET ROULANT ELECTRIQUE
 - VR : VOLET ROULANT
 - OB : OSCILLO BATTANT

-  E.T.E.L. ESPACE TECHNIQUE ELECTRIQUE DU LOGEMENT
-  SOFFITE
-  CLOISON DÉMONTABLE
-  RETOMBÉE DE POUTRE (Suivant étude BA) ou RETOMBÉE DE BALCON
-  TRAPPE ACCES VMC
-  PARE-VUE BOIS (HT min 2.50m)
-  CLÔTURE
-  TALUS
-  GRAVIERS
-  HAIE



NOTA: Des modifications mineures ou des aménagements de détails nécessaires pour des raisons d'ordre technique ou administratif pourront être apportés aux plans.