

49 mail François Mitterrand - 35000 RENNES  
Tél: 02.99.85.99.03 - [www.cap-accession.fr](http://www.cap-accession.fr)




**Rue de La Blosse - 35340 LIFFRE**

49 mail François Mitterrand - 35000 RENNES  
Tél: 02.99.85.99.03 - [www.cap-accession.fr](http://www.cap-accession.fr)

This architectural floor plan depicts a 4-room apartment with the following details:

- Entrée:** The main entrance area, outlined with a red dashed line.
- WC:** A toilet room with a width of 1.44m and a depth of 1.39m.
- Chambre 1:** A bedroom with a width of 4.12m and a depth of 2.82m.
- Chambre 2:** A bedroom with a width of 3.09m and a depth of 2.94m.
- Séjour/Cuisine:** The living and dining area, with a width of 3.84m and a depth of 3.92m.
- Sde:** A small side area or closet with a width of 2.41m and a depth of 2.90m.
- Balcon 1:** A large balcony at the bottom with a width of 9.03m and a depth of 2.84m.
- Balcon 2:** A balcony on the right side with a width of 1.41m and a depth of 2.59m.
- Other Labels:** The plan includes various abbreviations such as 'Ch', 'LL', 'Dgt', 'GTL', 'LV', 'C', 'R', 'Abri', 'PF VR', 'PF VRE', and 'Seuil à franchir : 11 cm minimum'.
- Dimensions:** Numerous numerical dimensions are provided for walls, openings, and room areas.
- Layout:** The apartment is situated on a grid, with rooms and balconies arranged around a central living area.

A horizontal number line with tick marks at 0m, 1m, 2m, 3m, 4m, and 5m.

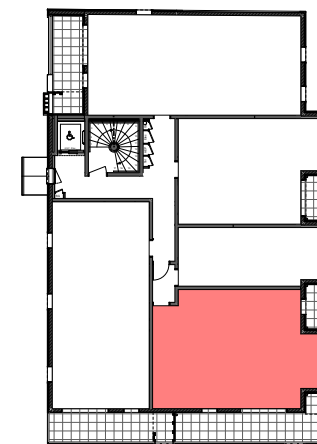
	Soffite	VRE Volet roulant électrique	F Fenêtre	 Ch	Chaudière	
VR	Volet roulant	PF Porte-fenêtre	AVF Allège vitrée fixe	 BEC	Ballon d'eau chaude	GTL Tableau électrique



**NOTA:** Le présent plan pourra subir des adaptations d'ordre administratif ou technique, afin de répondre aux contraintes induites par les études détaillées d'exécution. Les éléments de mobilier, meubles, plans de travail, ne sont placés qu'à titre indicatif. Les poutres, poteaux et soffites n'apparaissent pas systématiquement.

**ATELIER LOYER ARCHITECTES**  
4 Bis Rue de la Noë - 35170 BRUZ  
Tél. 02 99 05 99 05 - Fax 02 99 05 99 00  
Email: [architecte.loyer@wanadoo.fr](mailto:architecte.loyer@wanadoo.fr)

<b>Logement A1-14</b>	<b>T3</b>	<b>R+1</b>
<b>Pièces</b>	<b>Surfaces habitables</b>	<b>Surfaces utiles</b>
Entrée	5.56 m²	
Dgt	3.68 m²	
WC	1.99 m²	
Séjour/Cuisine	19.16 m²	
Chambre 1	11.31 m²	
Chambre 2	9.09 m²	
Sde	6.16 m²	
<b>TOTAL</b>	<b>56.92 m²</b>	
<b>Surfaces annexes</b>	Balcon 1	17.77 m²
	Balcon 2	3.91 m²



27 Mai 2024

## Logement A1-14