

Les TAMARIS

35 220 CHATEAUBOURG

Maître d'oeuvre
RHIZOME
AGENCE D'ARCHITECTURE ET D'URBANISME
 RHIZOME
 18 avenue du bois labbé - 35000 RENNES
 Tél: 02.99.27.76.33 - www.agence-rhizome.fr

Maître d'ouvrage
 SCCV "LES OCEANIDES"
 49, mail François Mitterrand - 35000 RENNES
 Tél: 02.99.85.99.03 - www.cap-accession.fr

Maître d'ouvrage délégué



C102

T3

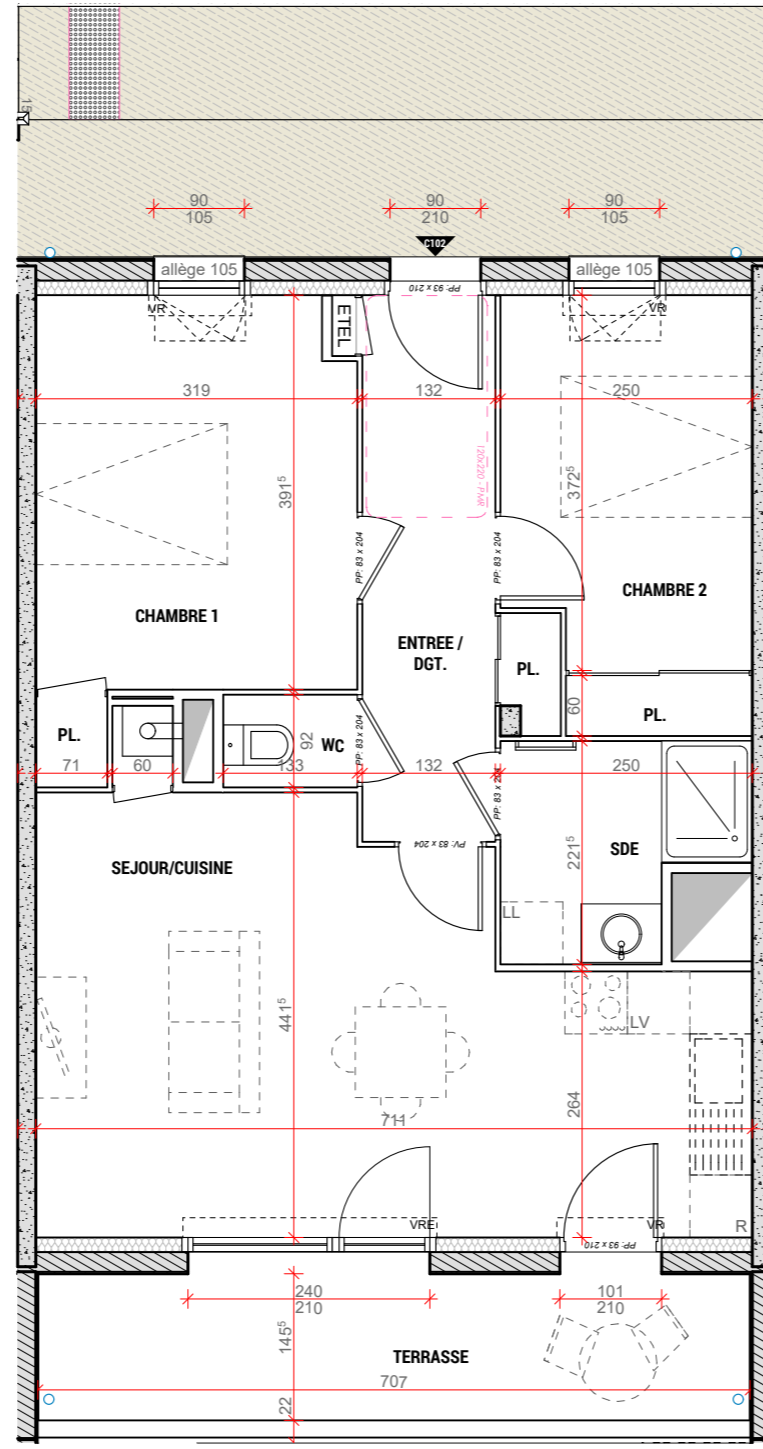
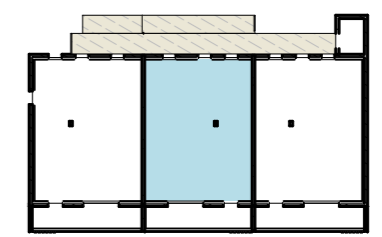
APPARTEMENT
C102

R+1



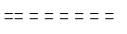

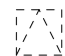
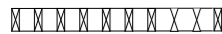
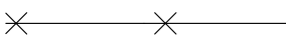

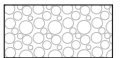

Le: 07 Juillet 2022
 Echelle: 1/75

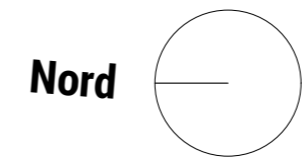
DESIGNATION	SURFACES HABITABLES
ENTREE / DGT + PL.	7.75
SEJOUR / CUISINE	26.55
WC	1.15
SDE	4.60
CHAMBRE 1 + PL.	12.80
CHAMBRE 2 + PL.	9.95
TOTAL	62.80
TERRASSE	10.25

LOCALISATION R+1



LEGENDE:
 - VRE : VOLET ROULANT ELECTRIQUE
 - VR : VOLET ROULANT
 - OB : OSCILLO BATTANT

-  **EDEL** ESPACE TECHNIQUE ELECTRIQUE DU LOGEMENT
-  **SOFFITE**
-  **CLOISON DÉMONTABLE**
-  **RETOMBÉE DE POUTRE (Suivant étude BA)**
ou RETOMBÉE DE BALCON
-  **TRAPPE ACCES VMC**
-  **PARE-VUE BOIS (HT min 2.50m)**
-  **CLÔTURE**
-  **TALUS**
-  **GRAVIERS**
-  **HAIE**



NOTA: Des modifications mineures ou des aménagements de détails nécessaires pour des raisons d'ordre technique ou administratif pourront être apportés aux plans.